

# COMMUNITY UPDATE 7

## Breakwater Construction

May 2021

Breakwater construction is underway at Ocean Reef Marina as we've reached a significant milestone with the first rocks hitting the water in April 2021. Extraction activities at Byford and Neerabup quarries are ongoing, providing 950,000 tonnes of granite and limestone for the breakwaters.

The new breakwaters will be approximately two kilometres long and up to 18.5 metres high from the ocean floor. Connected to the shoreline, these structures will extend offshore and will protect boats and users within the marina.

Construction is expected to take up to 18 months and includes new northern and southern breakwaters, and removal of the existing breakwater.

### Truck movements

A key part of the breakwater construction is the delivery of materials to the site. The volume of materials means there will be a significant truck movements travelling down Hodges Drive and along Ocean Reef Road from Monday to Saturday, 7am to 6pm.

Trucks transporting material will travel along two approved routes:

- From the Byford quarry via Tonkin Highway, Reid Highway, Wanneroo Road, Ocean Reef Road, Marmion Avenue, and Hodges Drive (turning left or right onto Ocean Reef Road for access to the southern or northern breakwater works areas).
- From the Neerabup quarry via Flynn Drive, Neerabup Road, Mitchell Freeway and Hodges Drive (turning left or right onto Ocean Reef Road for access into the to the southern or northern breakwater works areas).

To minimise the impact for residents in proximity to these routes, the following measures are in place:

- Loads are dampened before leaving the quarry to mitigate dust
- A water cart permanently on site to dampen down loads
- Use of air brakes is limited in residential areas, when it is safe to do so
- All trucks exit via wheel washers on site to avoid debris being transported onto adjacent roads
- Street sweepers are being used to clean debris and excess dirt on roads adjacent to the two site entries.

Truck movements along these routes are not expected to significantly impact traffic flows on the surrounding road network, however, there will be regular traffic monitoring and site checks undertaken as construction progresses.

For more detailed information about truck movements, download our fact sheet at [yoursay.developmentwa.com.au/ocean-reef-marina](https://yoursay.developmentwa.com.au/ocean-reef-marina)



## Safety for road users

The safety of the community and road users is paramount, and a range of measures are in place to address or reduce potential issues or concerns. The Traffic Management Plan outlines safety mitigation measures being implemented by the contractor. Trucks have been instructed not to overtake cyclists on Ocean Reef Road and signage has been installed to advise cyclists and road users of heavy vehicle movements in the area. Cyclists are advised to consider using the shared path instead of Ocean Reef Road during construction.

We will continue to work with WestCycle and City of Joondalup to implement safety measures across the project area, as required.

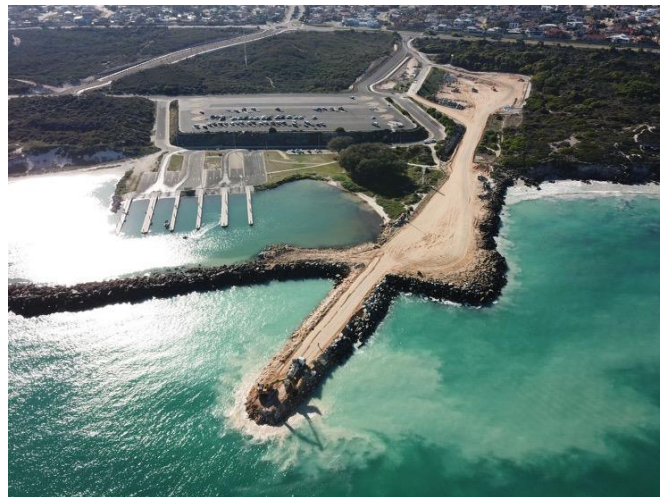
## Coastal path

We've been working with the local community and Construction Working Group who have told us how important the coastal shared path is to the Ocean Reef lifestyle. We recognise this and are committed to providing access throughout the life of the project.

A temporary detour of the path has been put in place to maintain a safe separation between the trucks, other road users and pedestrians/cyclists. This temporary detour is expected to be in place until the new path within the development is constructed. Approaching the site from the south, the temporary path takes pedestrians east along Boat Harbour Quays crossing at Ocean Reef Road. The new pedestrian path heads north past Resolute Way before heading west, to re-join the existing coastal path near the end of Gloriana View.

## Marine safety and access

A 50-metre exclusion zone has been implemented around the breakwaters to ensure the safety of the local boating community. This exclusion zone is being closely monitored, and work areas at the end of the breakwaters are marked by yellow buoys with flashing lights. The existing boat ramps and trailer parking will remain operational during breakwater construction.



## Working with the community

We understand some immediate residents are experiencing impacts from construction. There is a Construction Management Plan in place which outlines how noise, dust and vibration are being managed by the contractor.

We are committed to working with residents to reduce these impacts as much as possible, while still allowing construction to progress.

The next Construction Working group meeting will be held on Wednesday, 26 May 2021. We will also continue to engage the community on the longer-term aspirations for the project, including working with local schools to identify educational and learning opportunities.

## Stay informed

We will continue to provide regular updates to surrounding residents on the breakwater works and what to expect as construction progresses.

Construction Updates will be available on [yoursay.developmentwa.com.au/ocean-reef-marina](https://yoursay.developmentwa.com.au/ocean-reef-marina) where you can also register to stay informed via email.

For further information on the breakwater works or to speak to someone about the project, please call our information line on **1800 943 121** or email us at [oceanreefmarina@developmentwa.com.au](mailto:oceanreefmarina@developmentwa.com.au)

## KEEP IN TOUCH

Please contact our community information line or get in touch by email if you have any questions or concerns regarding construction works. Register to stay informed on our website and get in touch through our Ocean Reef Marina project channels.



1800 943 121



[oceanreefmarina@developmentwa.com.au](mailto:oceanreefmarina@developmentwa.com.au)



[Developmentwa.com.au/oceanreefmarina](https://developmentwa.com.au/oceanreefmarina)



@oceanreefmarina



[Yoursay.developmentwa.com.au/ocean-reef-marina](https://yoursay.developmentwa.com.au/ocean-reef-marina)