

Subi East Redevelopment – Update #25

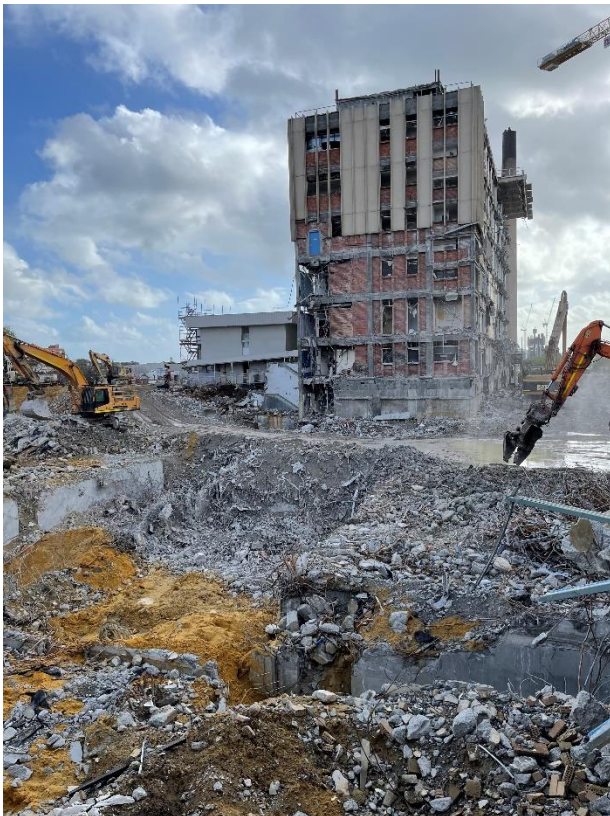
Delivering a safe worksite and protecting heritage

October 2021

Demolition progress

The above ground demolition of the buildings facing Hay Street and Thomas Road is now complete. The removal of concrete slabs and basements in these locations continues together with the sifting of debris from the sand. This process will ensure a clean site for future development.

During October 2021, attention will shift to the large building in the centre the site. This building has been stripped and prepared for mechanical demolition.



Centre building being prepared for mechanical demolition and basement removal

The equipment being used onsite includes pulverisers (a large hydraulic scissor to cut through concrete) and hydraulic rock breakers (a mechanical pounding hammer) to break large sections of concrete into smaller pieces for transport to off-site reprocessing facilities.

These machines have been in use for several months and produce a hammering sound that may be audible in the surrounding area.

The buildings on Roberts Road are being prepared for demolition, with Scaffclad (scaffolding with a specialised external membrane) being installed on the Roberts Road facing exteriors to assist in the control of dust during mechanical demolition.

Managing workplace safety

Ensuring a safe workplace is the priority for all personnel working at the PMH demolition site. This is particularly important when working in demolition environments, where large machines are operating in confined spaces and building debris is being managed from heights.

Last month the project passed a major milestone with 100,000 hours worked to date and no workplace injuries resulting in time off.

We can also report that there have been no exceedances of the dust, vibration or noise standards - an important measure for adjacent businesses, residents and community.

Preserving Heritage

Several buildings on the site have been identified for preservation, including Godfrey House (the large federation style red brick building on the corner of Thomas Street and Roberts Road) and the Old Outpatients Building located on the corner of Hay Street and Thomas Street.

The Old Outpatients Building was recently listed by the Heritage Council on the State Register of Heritage Places.

One of the first buildings constructed on the site, this building is a timber framed weatherboard structure built in 1909. In the past, its beauty and significance were consumed by the large hospital buildings that surrounded it.

The demolition of these large buildings provides the opportunity for this building to be appreciated by future generations and to celebrate the legacy of Perth's first Children's Hospital



Unique leadlight windows are one of the features of the Old Outpatients Building recommended for heritage listing

In addition to preserving European heritage, representatives of the traditional owners of the site, the Whadjuk Noongar nation, are present during the excavation of below ground materials. As the ground is disturbed by lifting concrete slabs and removing pipes, it is possible that Aboriginal artifacts may be discovered. The presence of Aboriginal Heritage Monitors ensures that artefacts can be identified and appropriately managed according to cultural protocols.

Demolition of the PMH Doctors Car Park

The former doctors car park will be demolished in early 2022 to enable the site to be remediated and serviced for future development.

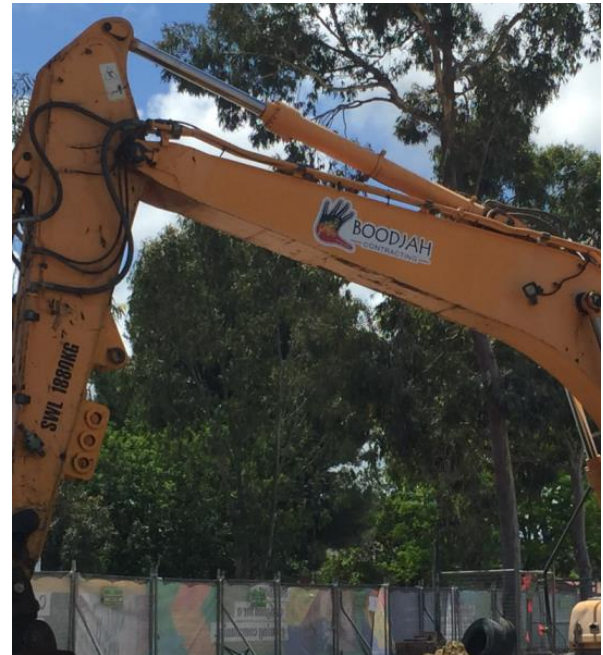
The car park was formally closed in mid-2020 and is currently being used by workers on the demolition site.

The car park will be the last building demolished and following its removal, the workers will park on a vacant part of the site.

New buildings at the site will be required to provide the required number of parking bays within their development site.

Aboriginal Engagement

DevelopmentWA and its contractor, RJ Vincent & Co, acknowledge the important role Traditional Owners have in the transformation of Subi East.



Excavator sourced from majority owned Aboriginal Company Boodjah Contracting

The project has employment and procurement targets to maximise the engagement with Aboriginal and Torres Strait Islanders.

At its peak, the project had 59 Aboriginal and Torres Strait Islanders working on the project and is well advanced to achieving its procurement target of purchasing 5% of the total project budget on services from majority owned Aboriginal companies.

Staying up to date

You can subscribe to have updates emailed directly to your inbox. If you are unable to access the information online, please call our 24/7 project information line on 1800 430 844 to make alternative arrangements. You can also email the project at subieast@developmentwa.com.au